

USER INSTRUCTION MANUAL

Uniden®UM50



GETTING TO KNOW THE UNIDEN UM50:

The Uniden UM50 will increase your cellular signal, expand your service coverage area, enhance voice call quality and significantly increase data speeds.

The Uniden UM50 is equipped with internal automatic oscillation protection. The booster constantly monitors the environment in which it is operating and automatically adjusts the gain/power accordingly to protect itself while giving you a maximum coverage footprint. It is easy and simple to install and you can be up and running in minutes.

Your Kit Includes:



Uniden UM50
Booster



Outdoor (signal)
Antenna



Interior (distribution)
Antenna



12V Power Supply

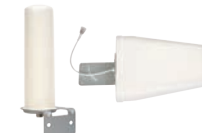
Optional In-Building Accessories:



Power Supply
110V Power Adapter



Cable
30 ft Coaxial Cable



Outdoor (signal) Antenna
Post or Yagi



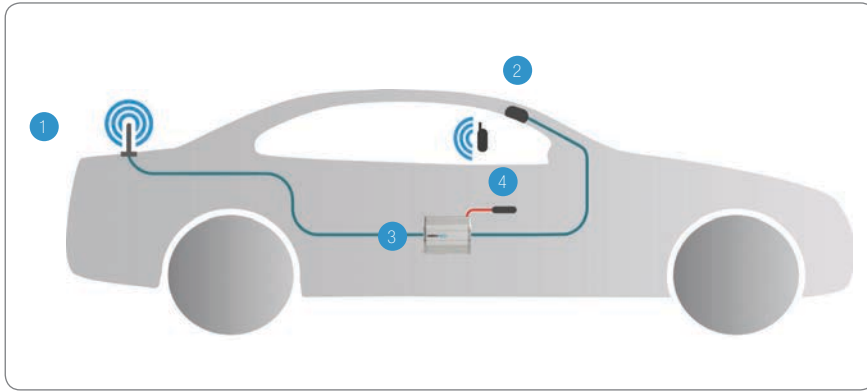
Interior (distribution)
Antenna
Panel or Whip

TECHNICAL SUPPORT CONTACT INFORMATION

Live Help: unidencellular.com
Email: support@unidencellular.com
Toll Free: 1-800-239-0394

2 year warranty against manufacturing defects.
Does not include misuse or customer damage.
Original Bill of Sale is required for all warranty claims.

TYPICAL VEHICLE INSTALLATION

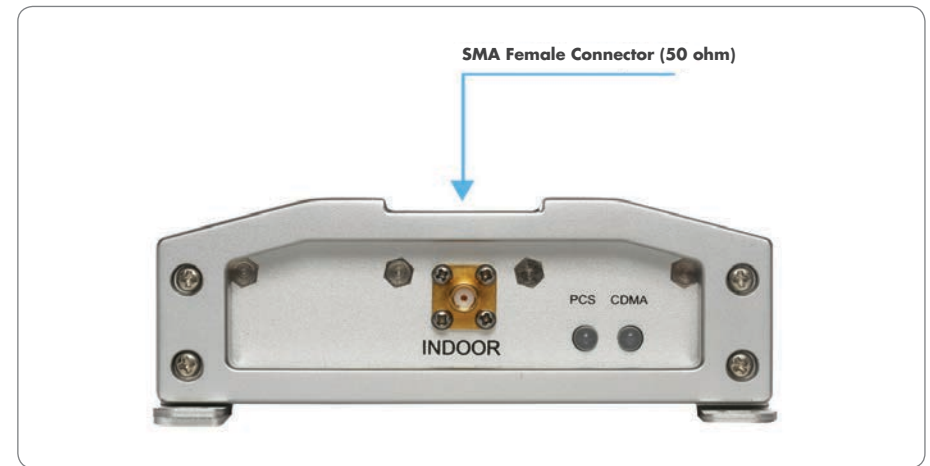


- | | |
|------------------------|-----------------------|
| 1 Outdoor Antenna | 3 Booster |
| 2 Distribution Antenna | 4 DC Power Connection |

INITIAL SETUP INSTALLATION & ASSEMBLY:

During this process you will connect the outdoor signal antenna, interior distributional antenna and the 12V power supply to the Uniden UM50 booster unit as follows:

- 1 OUTDOOR SIGNAL ANTENNA**
 Please connect the magnetic base unit to the outdoor antenna and place it on the metal roof of the vehicle. Try to keep it as far away from the interior antenna as possible. Once you have found the desired positioning for your outdoor antenna, connect it directly to the booster on the connection marked "Outdoor"
- 2 INTERIOR DISTRIBUTION ANTENNA**
 Identify an appropriate location for the interior antenna and keep it as far away as possible from the location of the outside antenna. Once you have found the desired positioning for your indoor antenna, connect it directly to the booster on the connection marked "Indoor"
- 3 BOOSTER PLACEMENT**
 You should place the booster in an easily accessible location within your vehicle i.e. Under the passenger seating, in the rear of the vehicle or any other location that keeps the booster hidden out of sight. Please DO NOT keep the booster in a location that is continuously exposed to sunlight as it can overheat.
- 4 COMMISSIONING THE SYSTEM**
 Plugging in the power will switch the Uniden UM50 ON causing the "Power" LED light on the backside of the unit to remain lit indicating the unit is properly powered.



Explanation of LED Light Indicators located on the rear of the unit

The intelligent Automatic Gain Controls (AGC) in the Uniden UM50 enables it to reduce the gain of the booster automatically and store these settings in the devices memory unit. The UM50 will then continue to automatically scan the frequency and self adjust accordingly every 5 seconds.

On the backside of the unit, you will find LED alarm lights. When the booster is commissioned these LED lights will light up. The color of the LED will let you know the status of the booster, see below:

- **Orange LED alarm lights** indicate the booster is automatically adjusting the gain. In which case, the booster is functional.
- **Red LED alarm lights** indicate oscillation (feedback) is severe and additional distance between the indoor and outdoor antenna is required. If the LED light continuously stays red, the UM50's Automatic Gain Control will attenuate the signal strength in order to stop the booster from oscillating.
- **Green LED alarm lights** indicate the booster is functioning properly.
 * Three solid green lights indicate the booster is functioning properly.